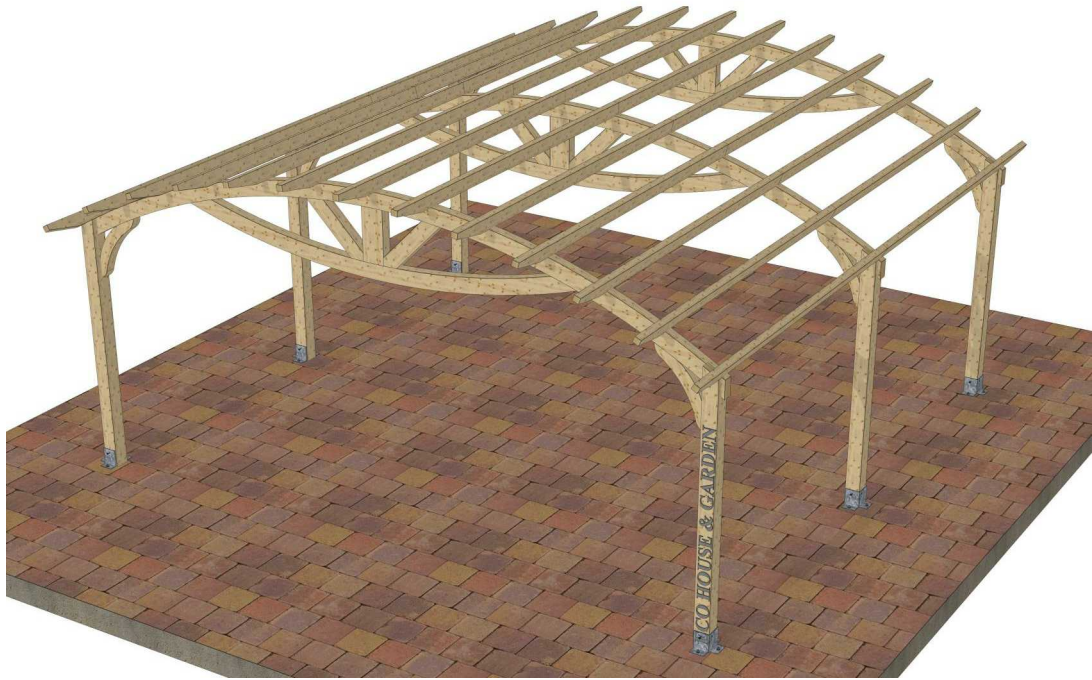


Eco House & Garden Srl



LUCAS

L = 590 cm

W = 595 cm

H = 215 cm

Eco House & Garden Srl

Str. Drumul Bercenarului, Nr. 2-4, Sector 4, CP .041116, București

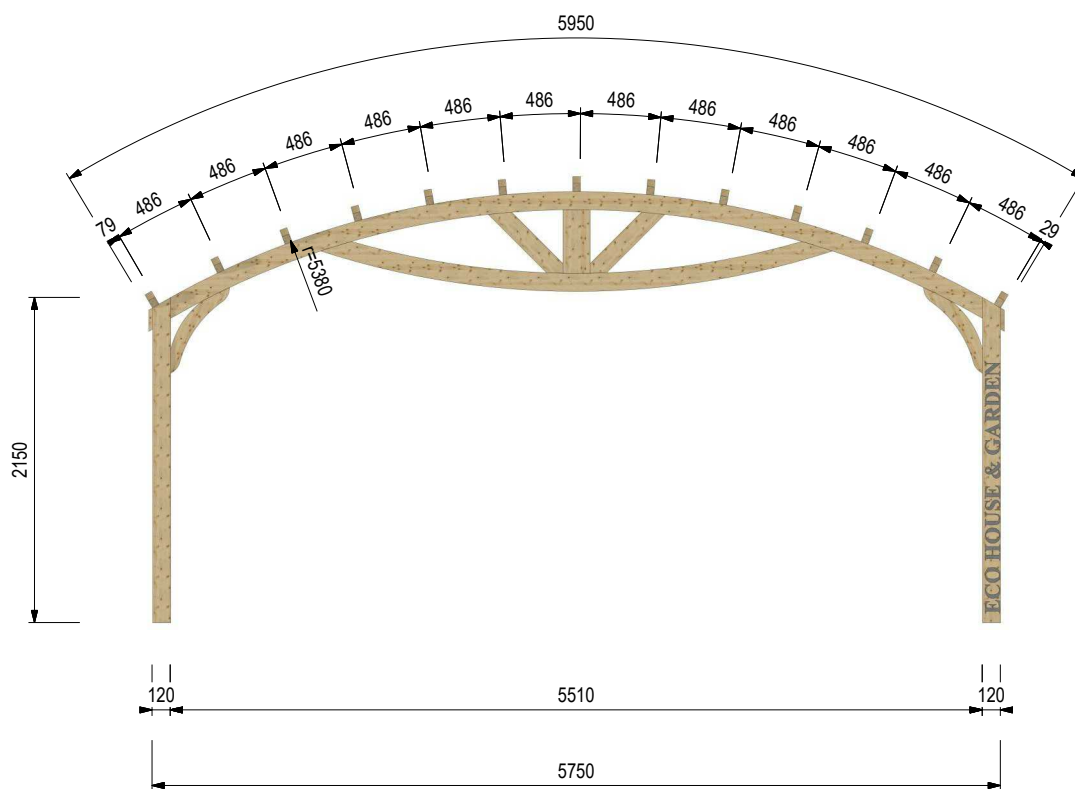
Tel. +40 786 873 196

E-mail: office@copertine-lemn.ro / copertinelemn@gmail.com

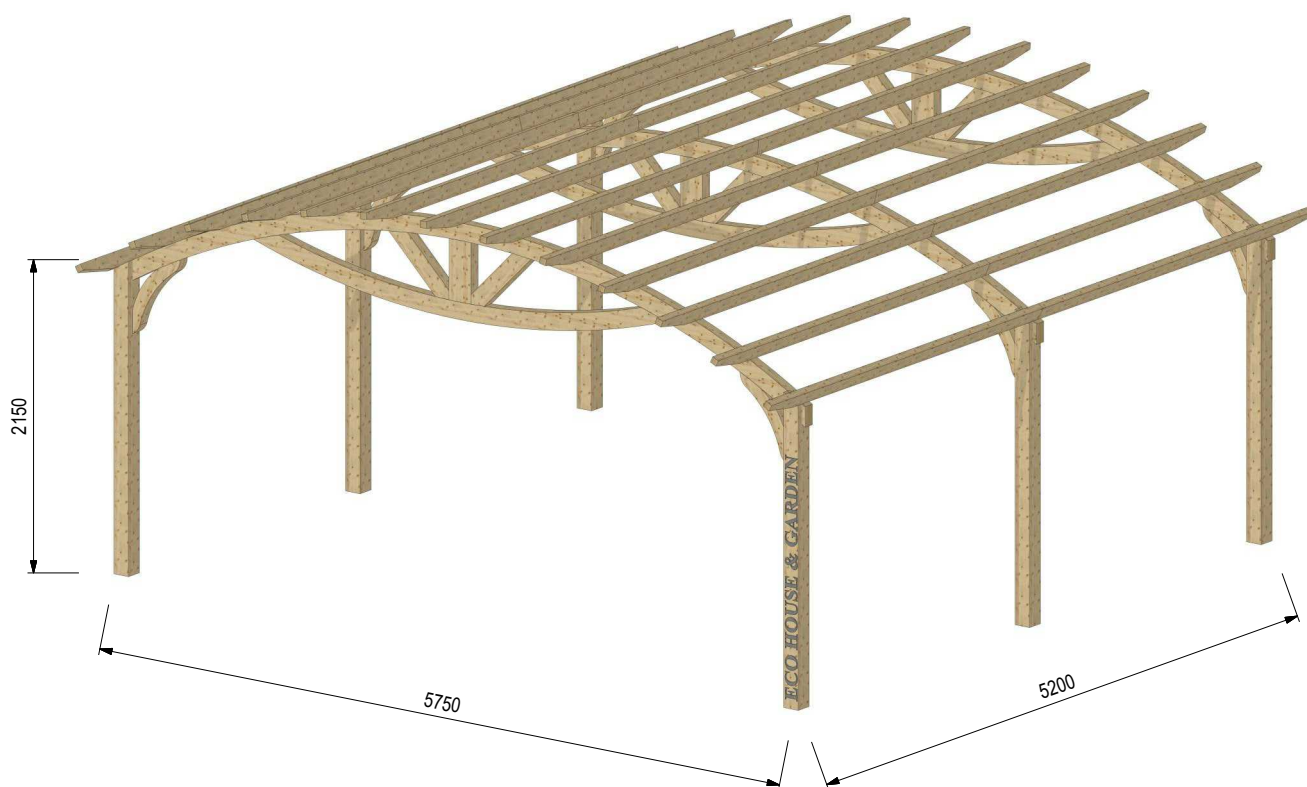
www.copertine-lemn.ro

www.facebook.com/ecohouse.garden

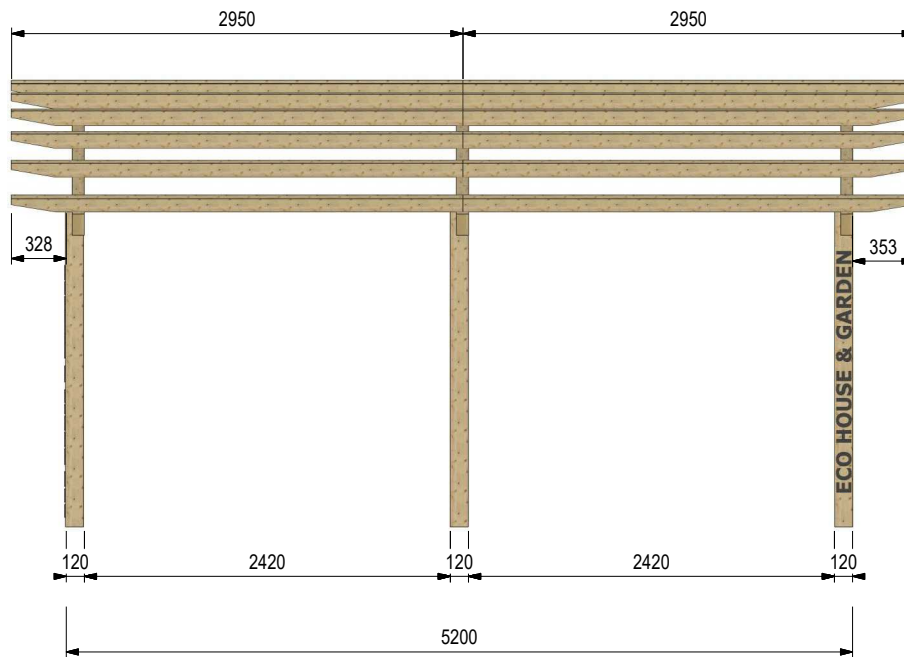
Vedere transversală



Vedere axionometrică



Vedere longitudinală



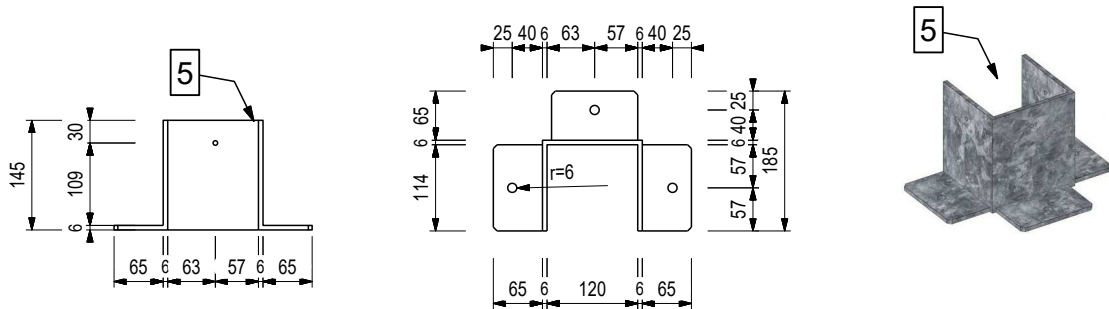
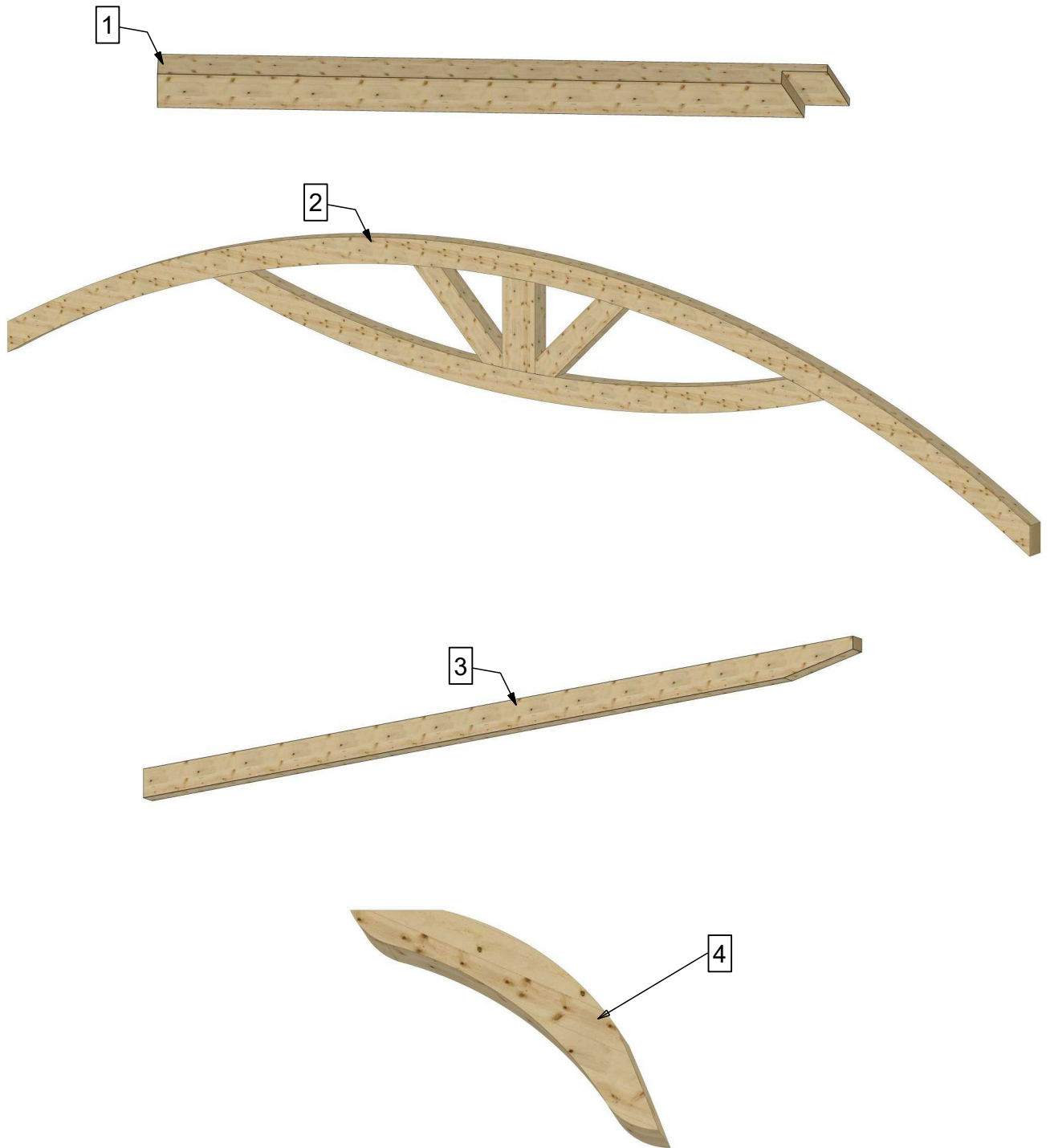
LISTĂ MATERIAL LUCAS

Nr. Elemente	Cantitate [buc]	Nume [mm]
1	6	Stâlp - 120x120x2150
2	3	Fermă
3	26	Traversă - 50x100x2950
4	6	Contravântuire

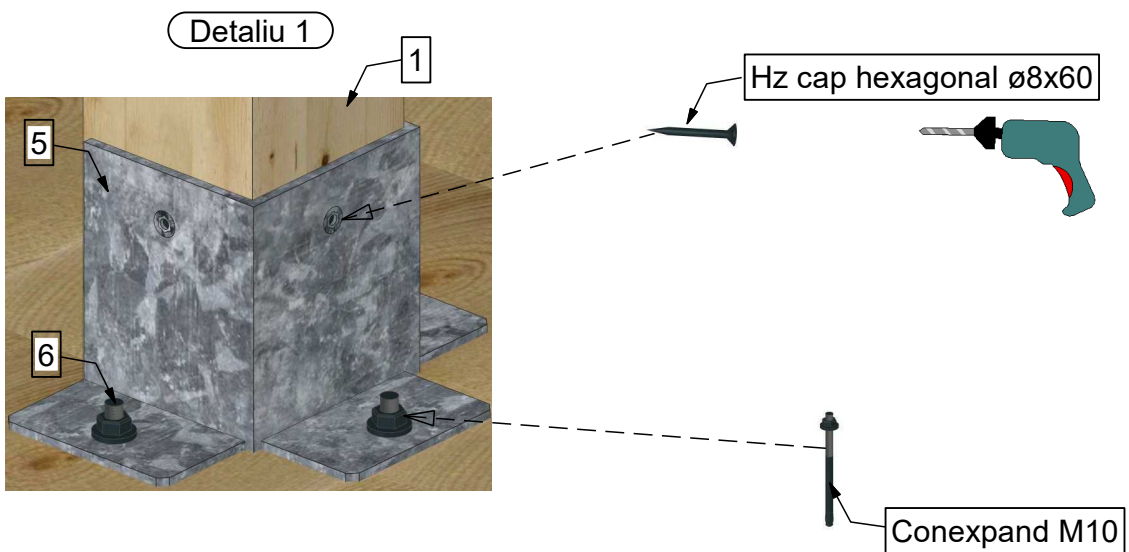
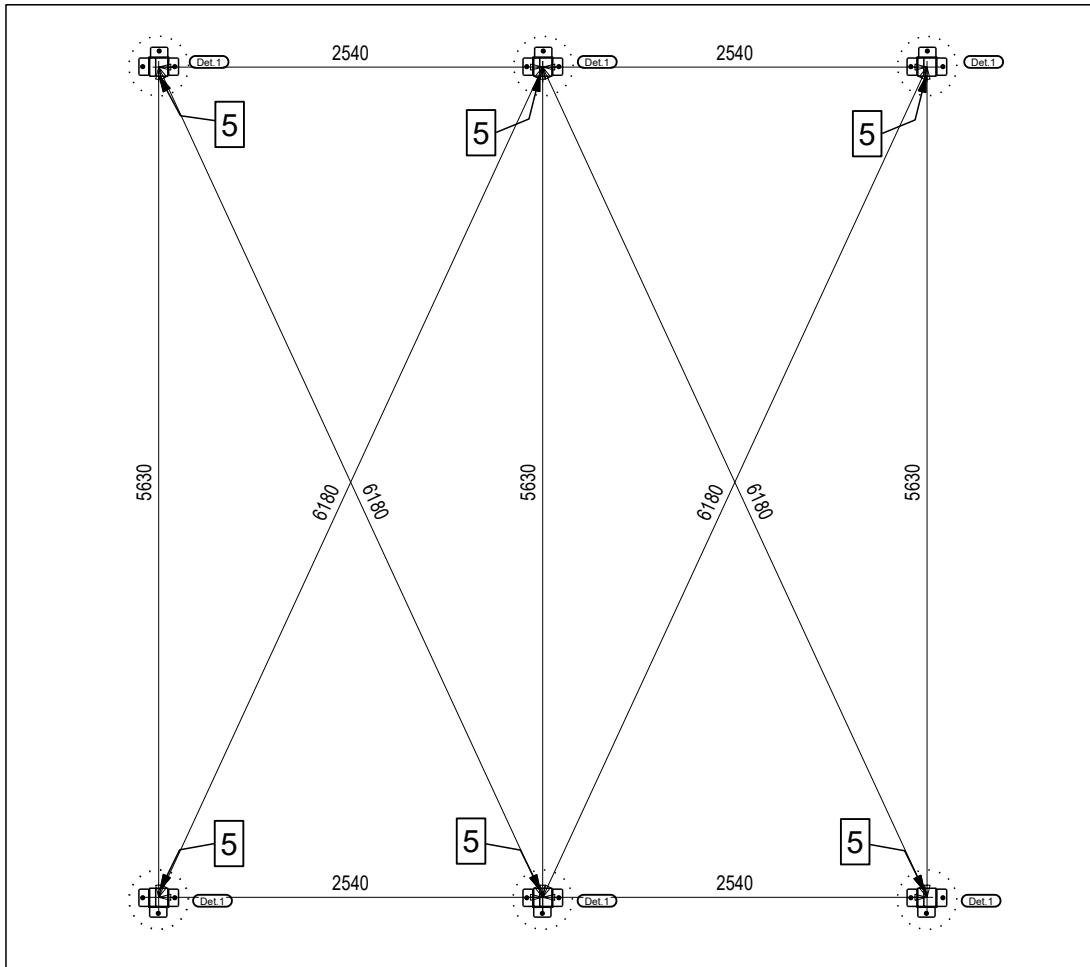
LISTĂ FERONERIE LUCAS

Nr. elemente	Cantitate [buc]	Nume [mm]
5	6	Papuc Metalic
6	18	Conexpand - M10
7	18	Holz-Şurub Cap Hexagonal \varnothing 8x60
8	24	Holz-Şurub Cap Hexagonal \varnothing 8x120
9	52	Holz-Şurub Cap Înecat \varnothing 6x160
10	12	Holz-Şurub Cap Înecat \varnothing 6x120

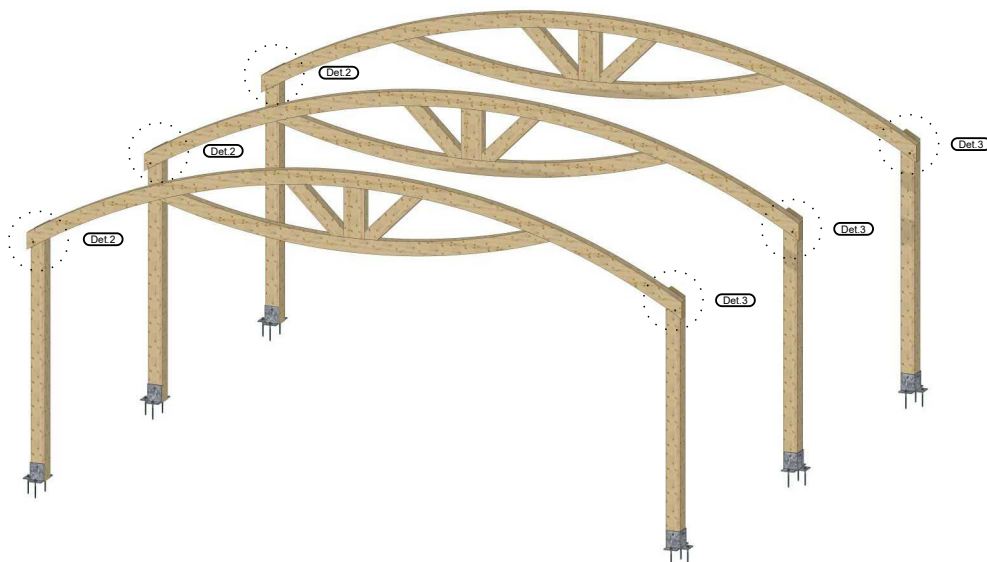
Piese



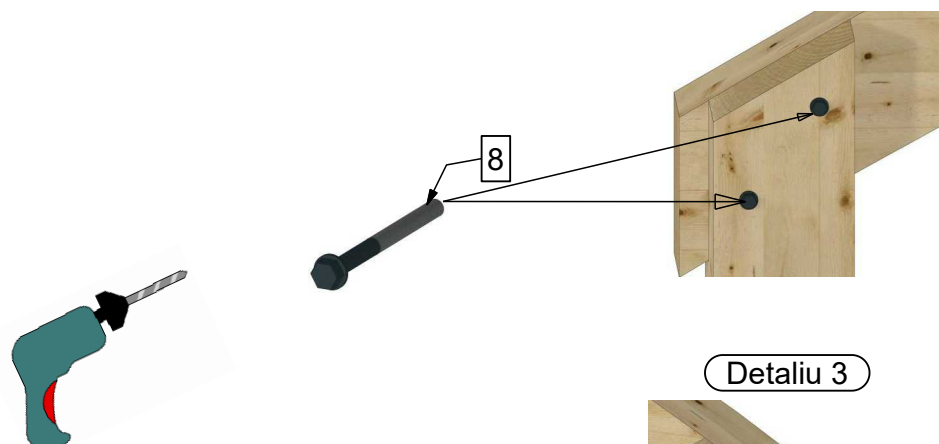
Poziționare stâlpi în fundament cu papucul metalic



Poziționare fermă în stâlpi

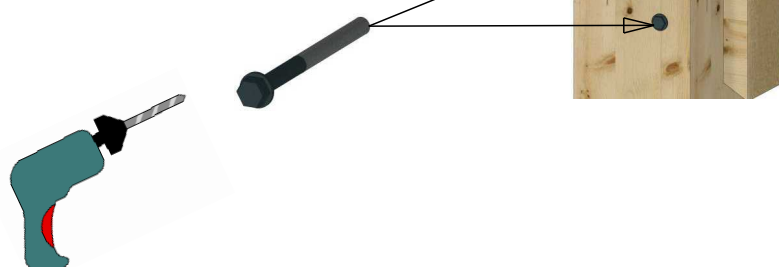


Detaliu 2



Detaliu 3

Hz cap hexagonal $\varnothing 8 \times 120$



Poziționare contravânturii



Detaliu 3



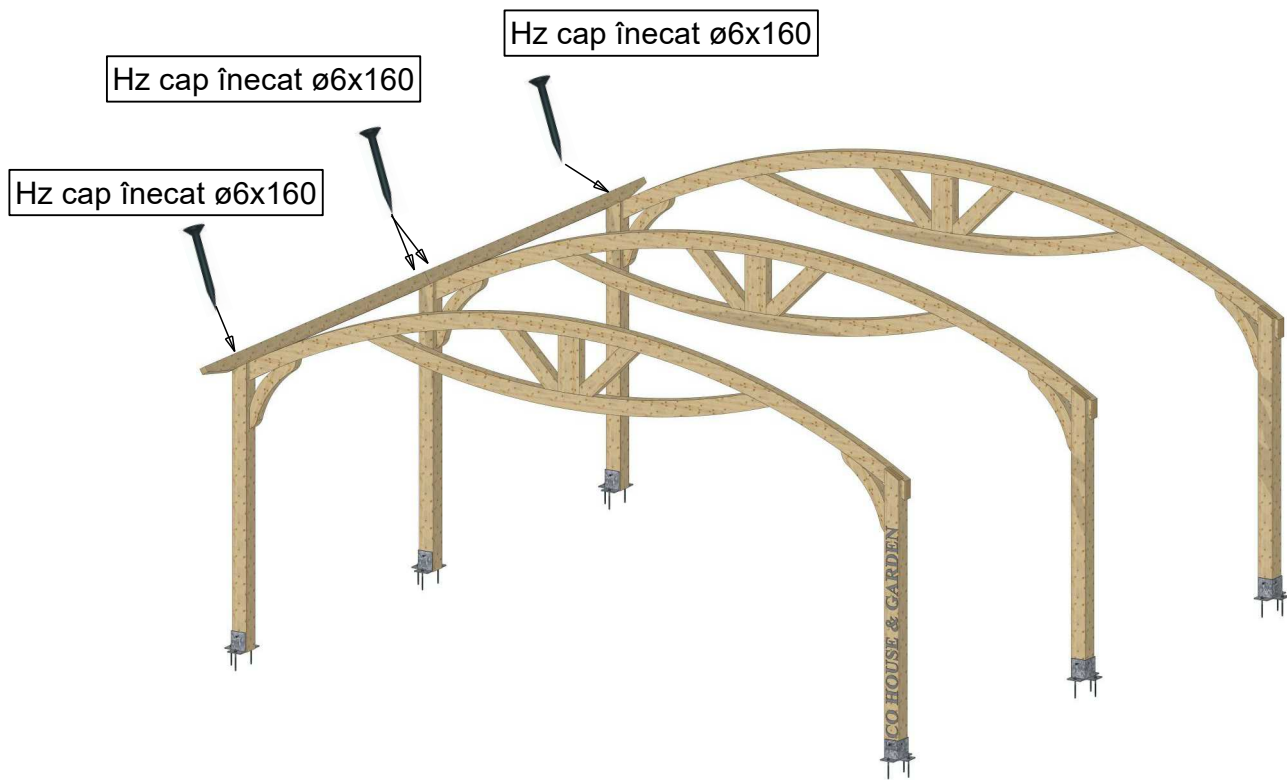
Hz cap înecat $\varnothing 6 \times 120$

Detaliu 4



Hz cap înecat $\varnothing 6 \times 120$

Poziționare traversă



Axionometrie finală

