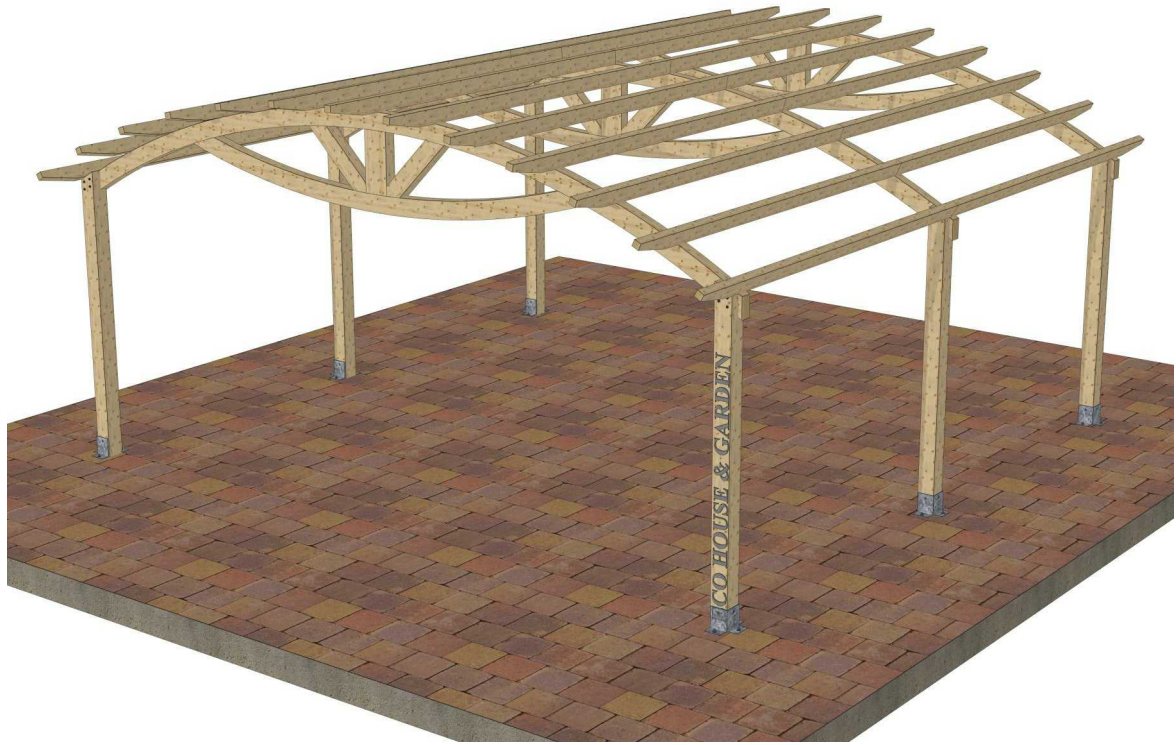


Eco House & Garden Srl



LUCAS

L = 597 cm

W = 595 cm

H = 215 cm

Eco House & Garden Srl

Str. Drumul Bercenarului, Nr. 2-4, Sector 4, CP .041116, București

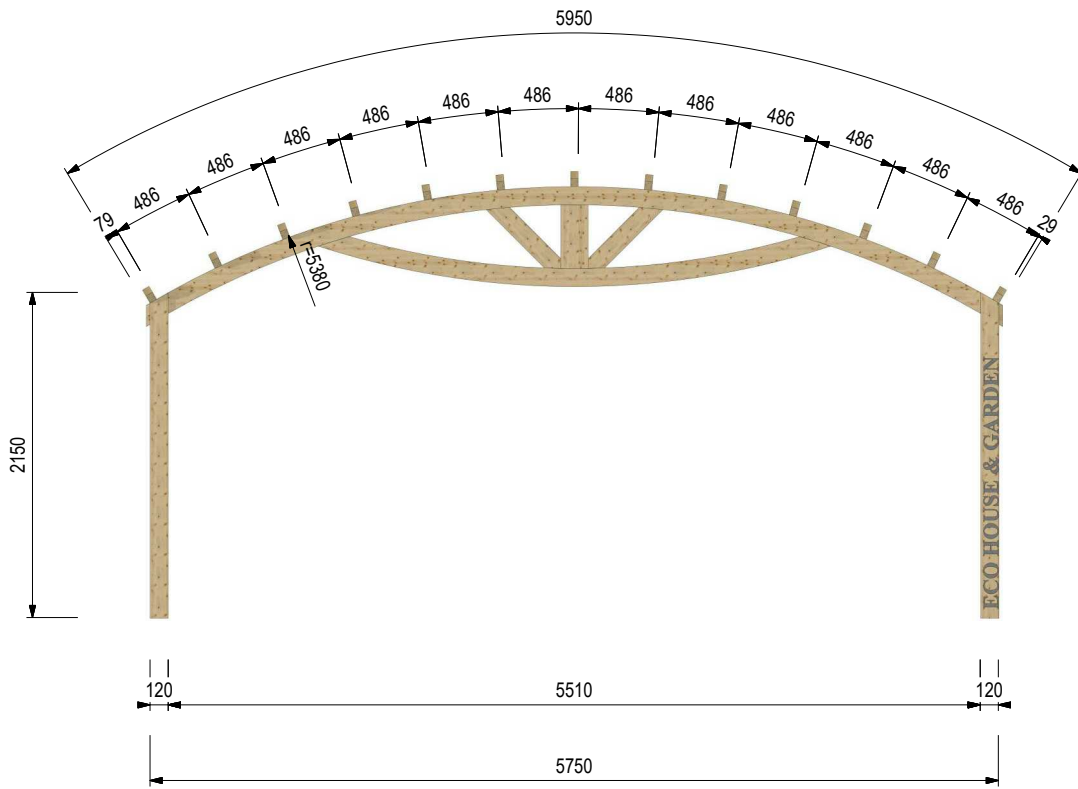
Tel. +40 786 873 196

E-mail: office@copertine-lemn.ro / copertinelemn@gmail.com

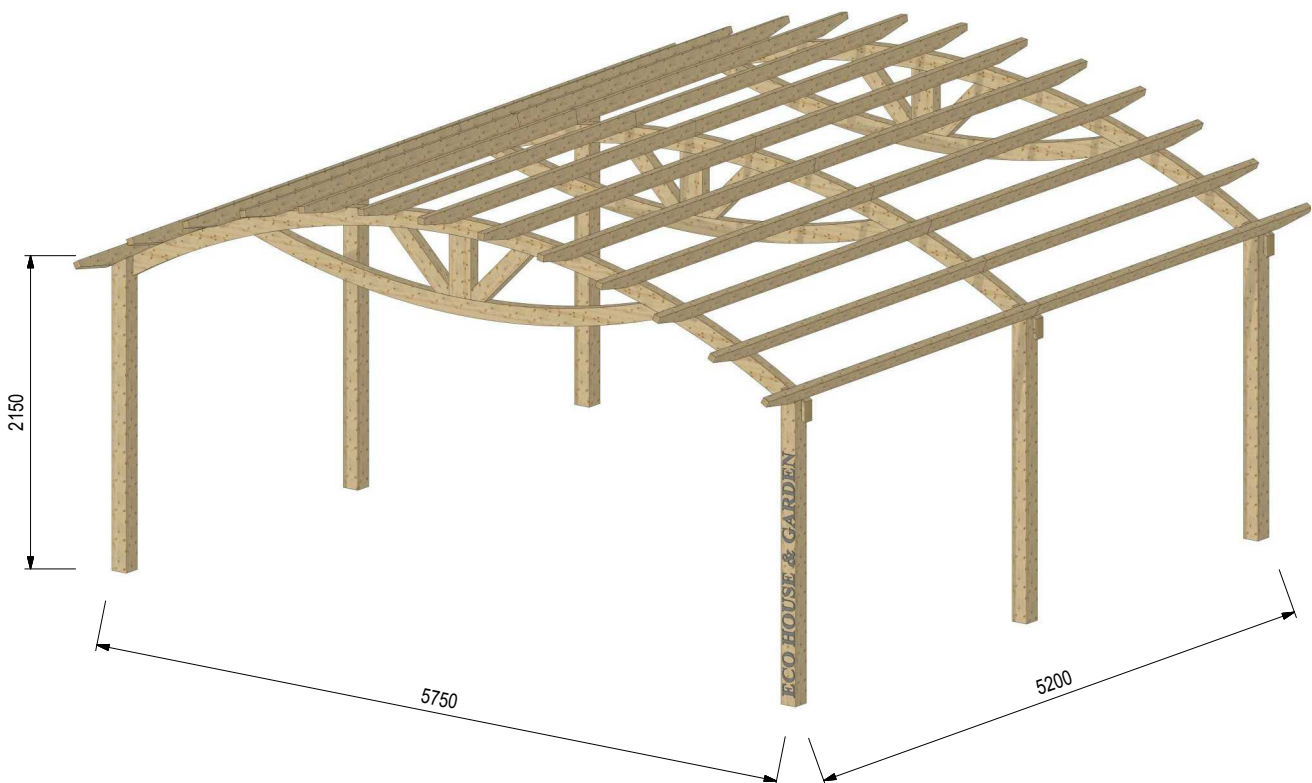
www.copertine-lemn.ro

www.facebook.com/ecohouse.garden

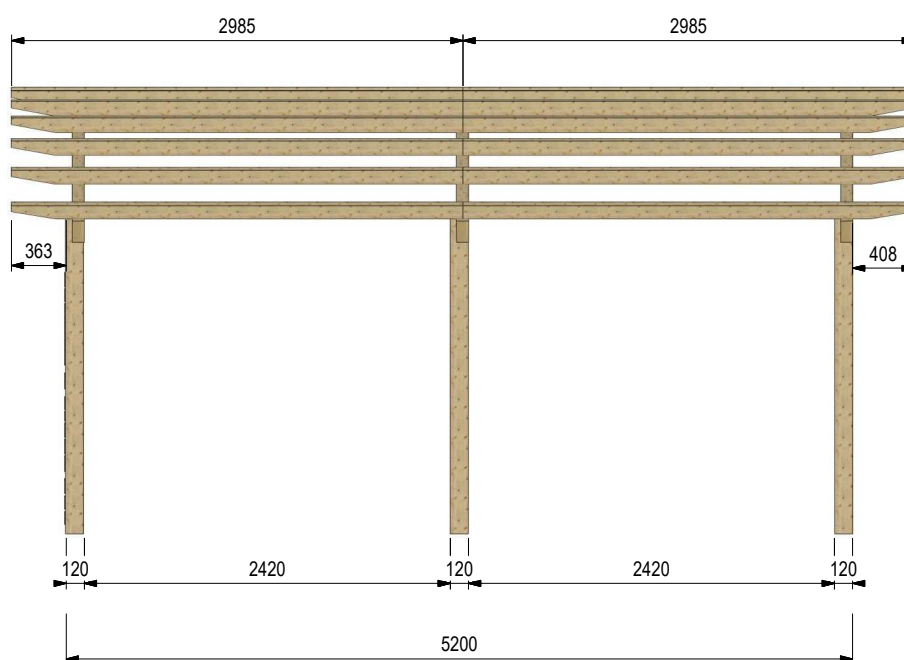
Vedere transversală



Vedere axionometrică



Vedere longitudinală



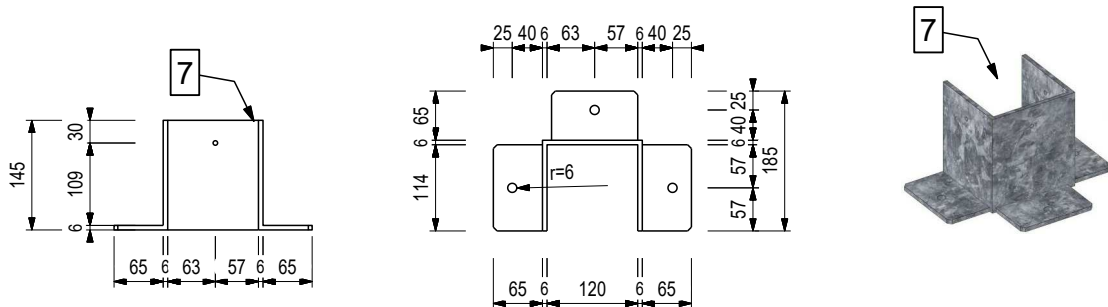
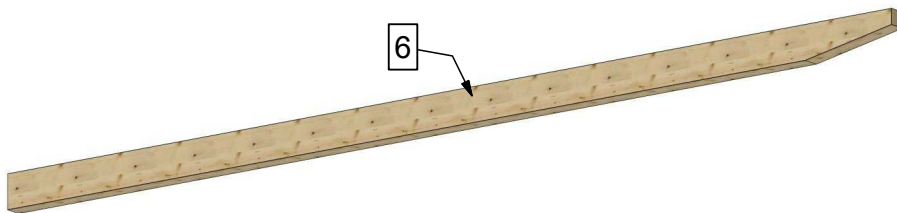
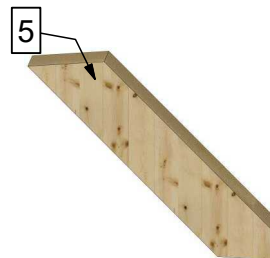
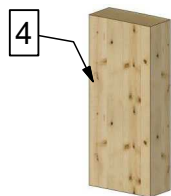
LISTĂ MATERIAL LUCAS

Nr. Elemente	Cantitate [buc]	Nume [mm]
1	6	Stâlp - 120x120x2150
2	3	Arc Lucas - 80x120x5950
3	3	Arc Lucas - 80x120x3440
4	3	Pop - 80x180x420
5	6	Contravântuire - 80x120x544
6	26	Traversă - 50x100x2985

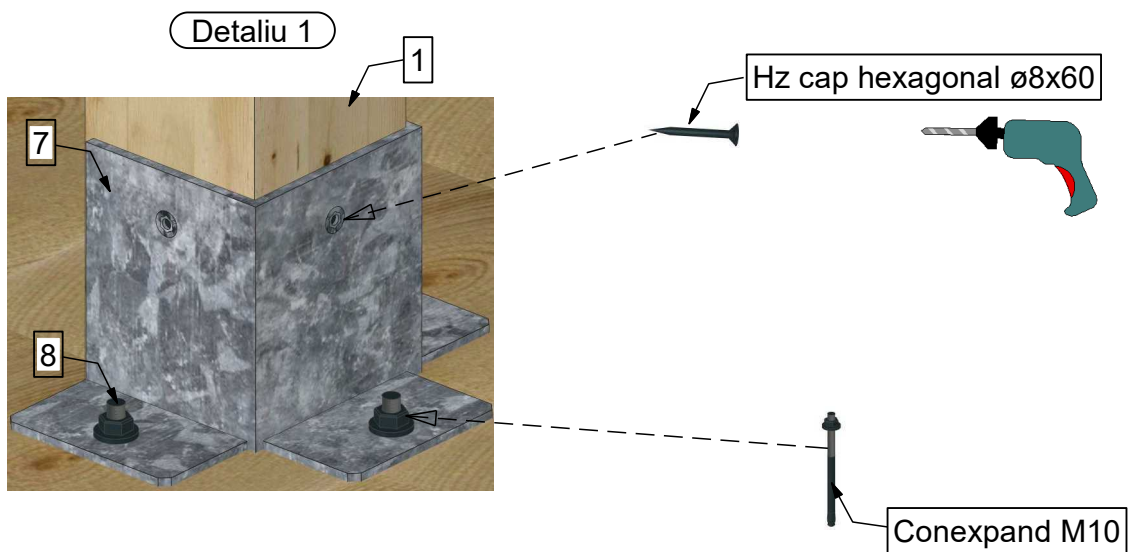
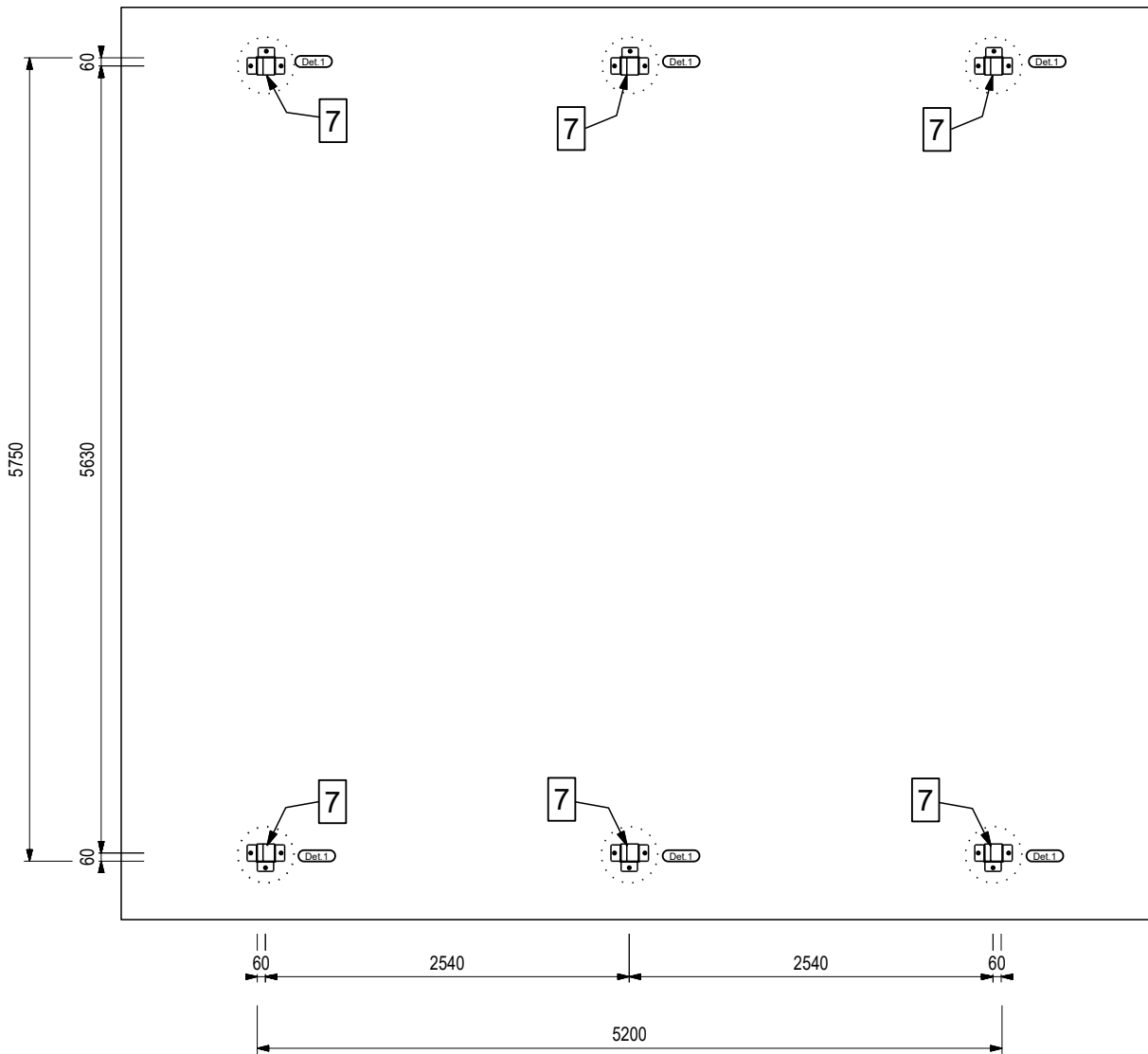
LISTĂ FERONERIE LUCAS

Nr. elemente	Cantitate [buc]	Nume [mm]
7	6	Papuc Metalic
8	18	Conexpand - M10
9	18	Holz-Şurub Cap Hexagonal \varnothing 8x60
10	30	Holz-Şurub Cap Hexagonal \varnothing 6x200
11	24	Holz-Şurub Cap Hexagonal \varnothing 8x140
12	58	Holz-Şurub Cap Înecat \varnothing 6x160

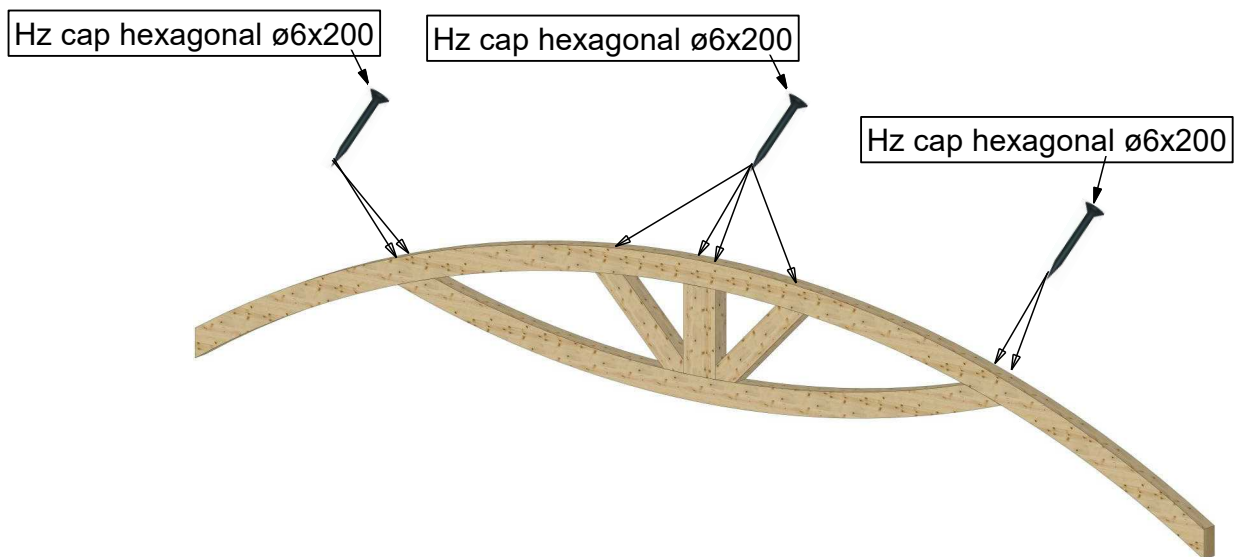
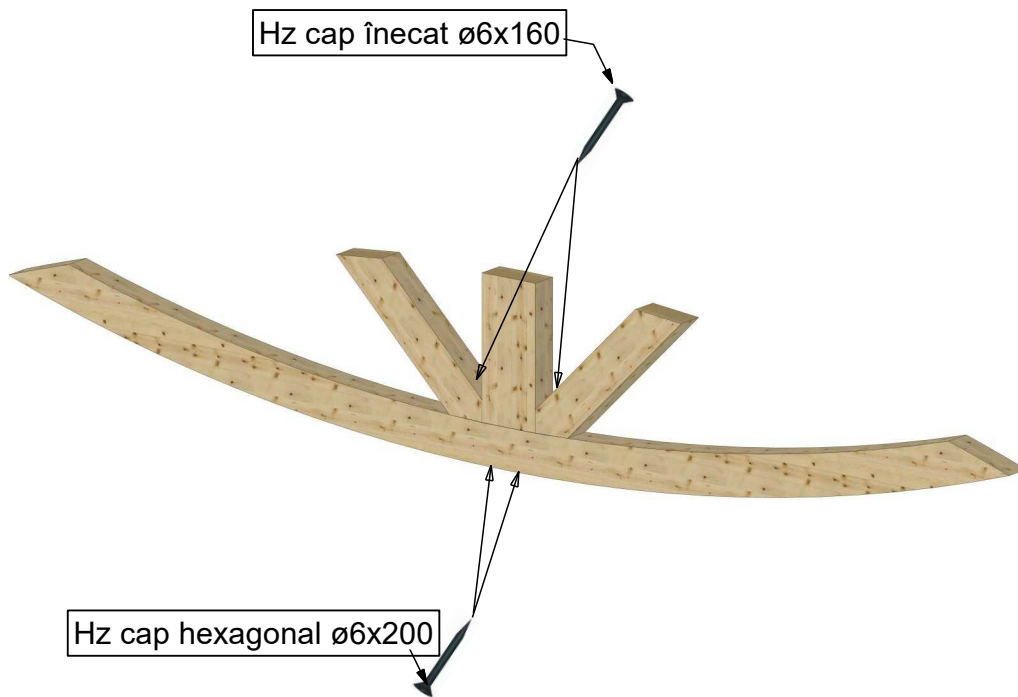
Piese



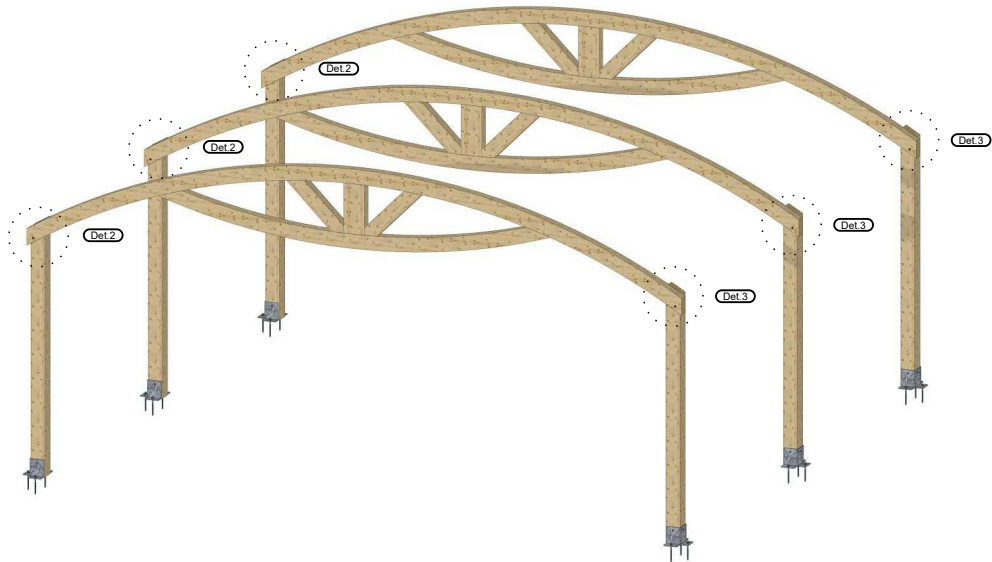
Poziționare stâlpi în fundament cu papucul metalic



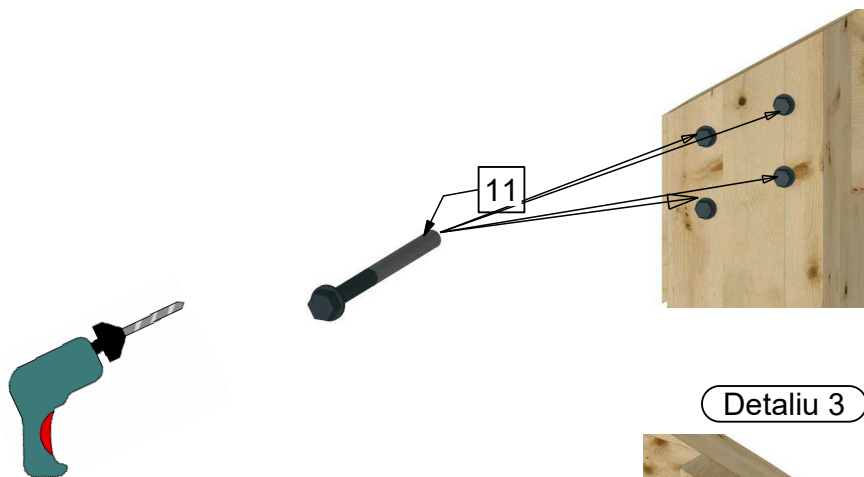
Ansamblare fermă



Poziționare fermă în stâlpi

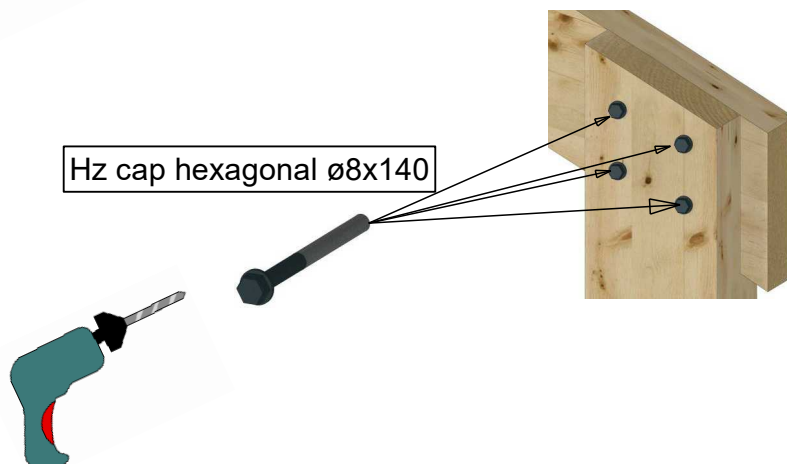


Detaliu 2

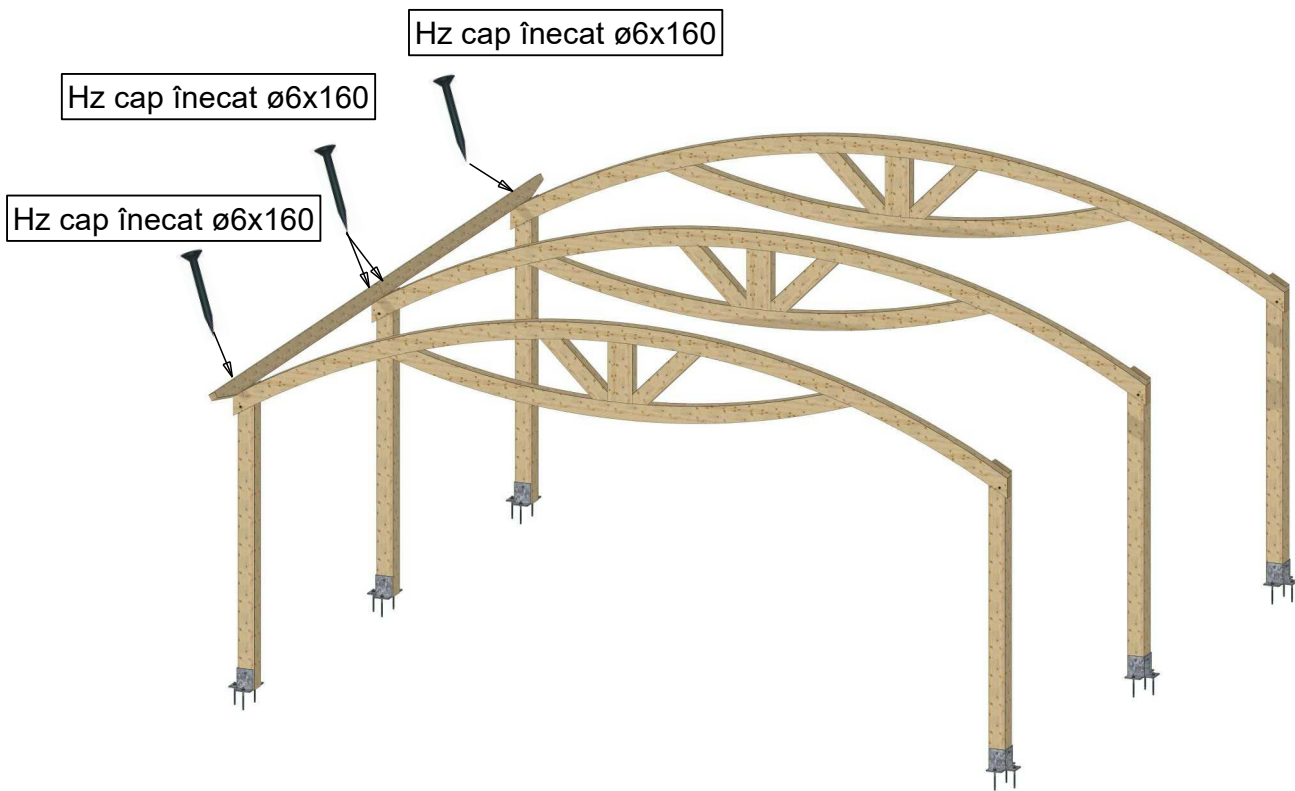


Detaliu 3

Hz cap hexagonal $\varnothing 8 \times 140$



Poziționare traversă



Axionometrie finală

